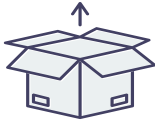


# Portable Digital Display Getting Started Guide

## Welcome to Your New Portable Digital Display!

Thank you for choosing TV Liquidator for your digital signage needs! Our digital displays are designed to help increase your organization's visibility with vibrant, eye-catching content. Follow these simple steps to get started and make the most out of your new sign.

### 1 Unpack Your Display

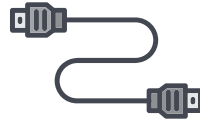


Carefully remove the display from its crate. Make sure to keep all included materials such as accessories and connecting cables.

Crate Contents:

1. Portable Display Unit
2. Accessory Bag
3. Extension Cables

### 2 Locate Input Extension Cables



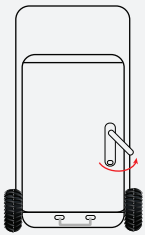
Look in the crate for a bag with extension cables. These are going to be installed on the inside of your display to enable easy access to your available ports. With these extensions, you'll easily access your ports despite the positioning of components.

### 3 Installation

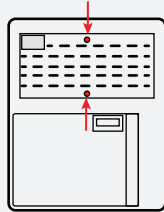


1. **Open back of sign and remove protective panel.**  
See 3.1 below for instructions on how to do this.
2. **Install extension cables in the corresponding ports.**  
See 3.2 below for instructions on how to do this.
3. **Replace panel and secure in place with screws.**

#### 3.1 - Panel Removal



Open back panel by pressing button then twisting handle right.



Be sure the unit is powered off. Then locate the top grate and unscrew the two bolts as shown in red in the image above.

**IMPORTANT:** This section contains the power supply, located to the left of the motherboard. **PLEASE AVOID CONTACT WITH THE POWER SUPPLY** to ensure safe operation. Focus only on handling the motherboard, highlighted in green below.

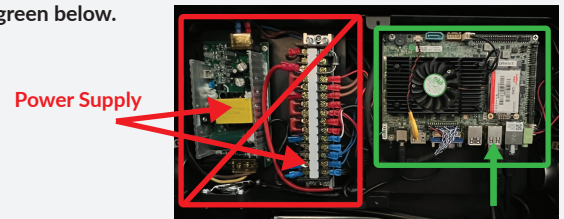
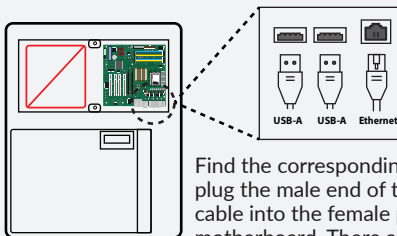


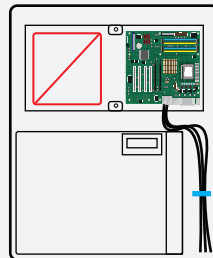
Image 1

Motherboard

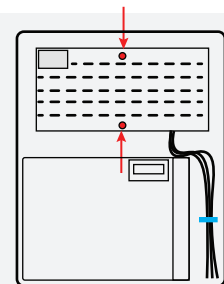
#### 3.2 - Install Extension Cables



Find the corresponding input and plug the male end of the extension cable into the female port on the motherboard. There are 2 USB-A and 1 Ethernet ports.



After plugging all cables into their inputs find the cable clip binding the cables, as shown in blue, peel off the paper backing and mount the cable clip to the back of the unit, securing the cables in place and preventing them from being pulled out. The new inputs on the end will be how you connect your media.



Carefully Replace protective panel and close door. **You're done!** See User Manual for operating instructions.



Call Us at 888-885-7740 if you have any questions about this process.

Thank you for choosing TV Liquidator!